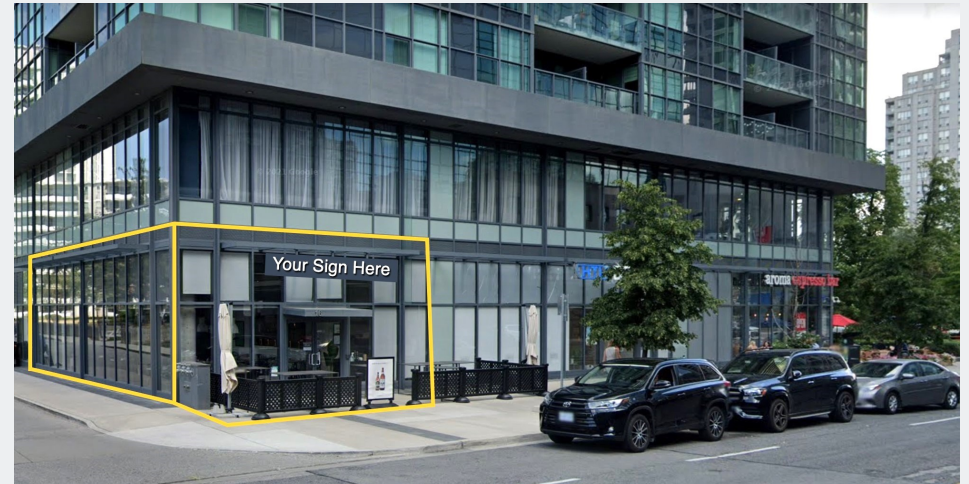


PRIME RETAIL SPACE FOR LEASE NORTH YORK

2,131 SQUARE FEET

16 PARK HOME AVE, TORONTO
"GIBSON SQUARE"



- Expansive corner glazed storefront
- Excellent exterior signage opportunity
- Surrounded by a large concentration of high density residential and office buildings, theatres, and shopping
- On site access to Yonge Subway
- Public parking available on site
- Available March 1st 2023

FOR LEASING
INFORMATION
CONTACT:



Sam Wertman, Broker of Record
30 Westover Hill Road, Toronto, Ontario M6C 3J5
P: 416.787.7767 C: 416.801.0176 E: sam@retaillogic.ca