

25 YORK

RETAIL

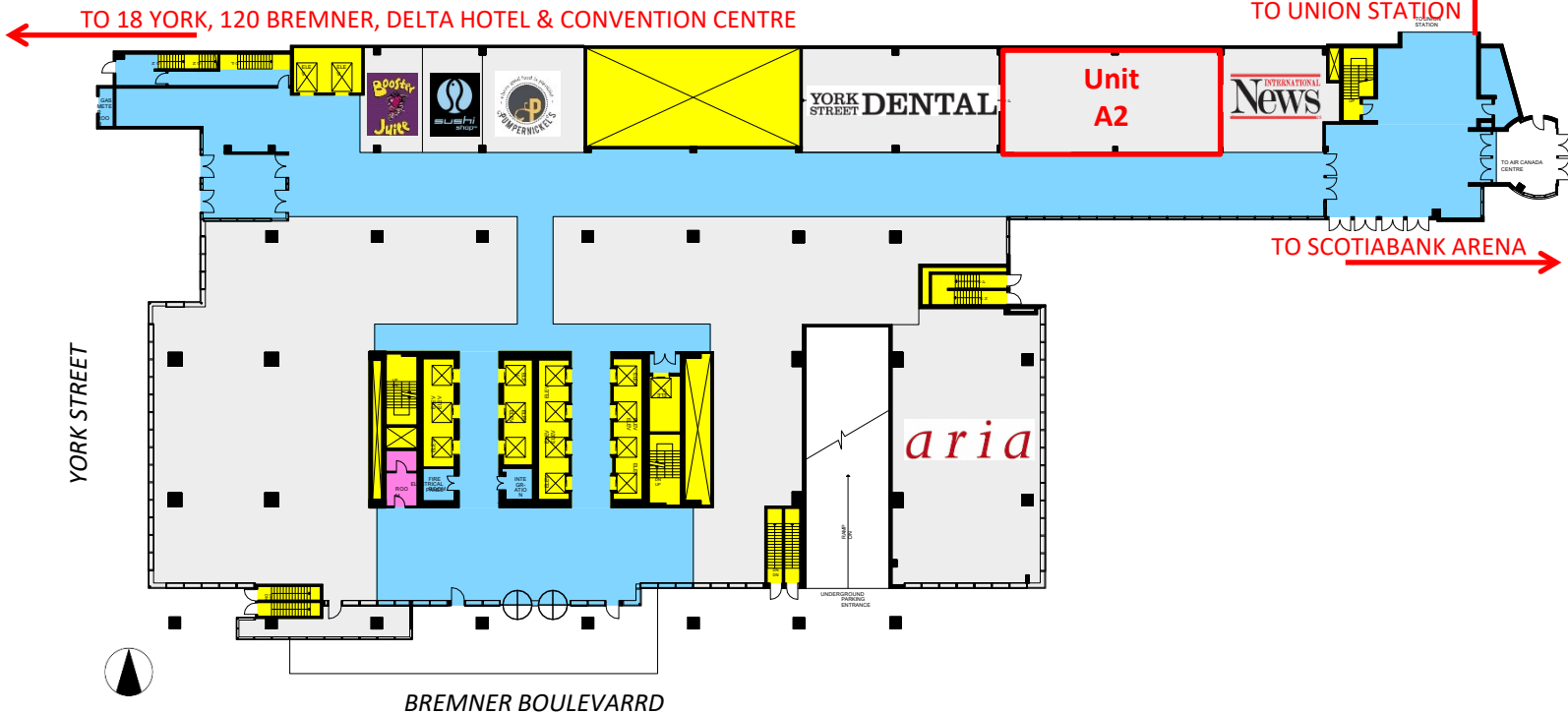
Strategic PATH
location at the base of
an 800,000sf office
building directly
connected to Union
Station, Scotiabank
Arena, and within
steps of the downtown
core and waterfront



Availabilities & Details

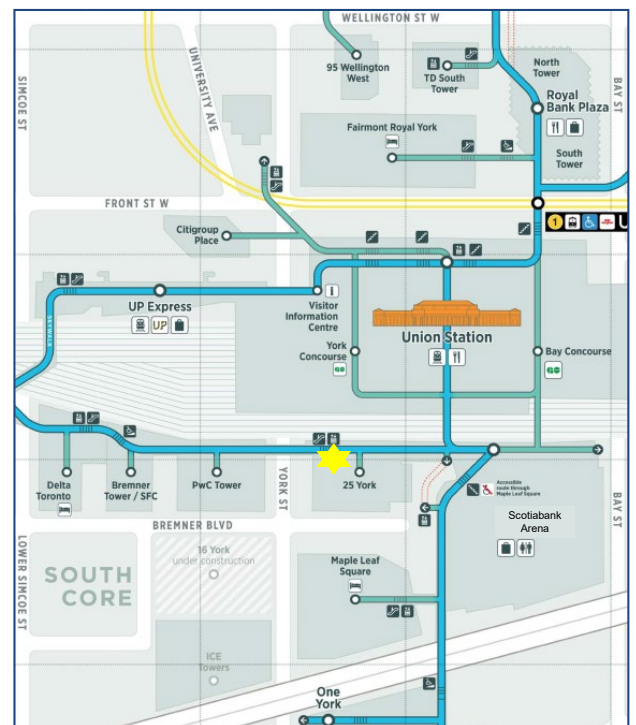
~1,557 sq.ft. of strategically located retail space available for lease.

Unit	Size	Available
Unit A2	~1,557 sq.ft.	August 1, 2021



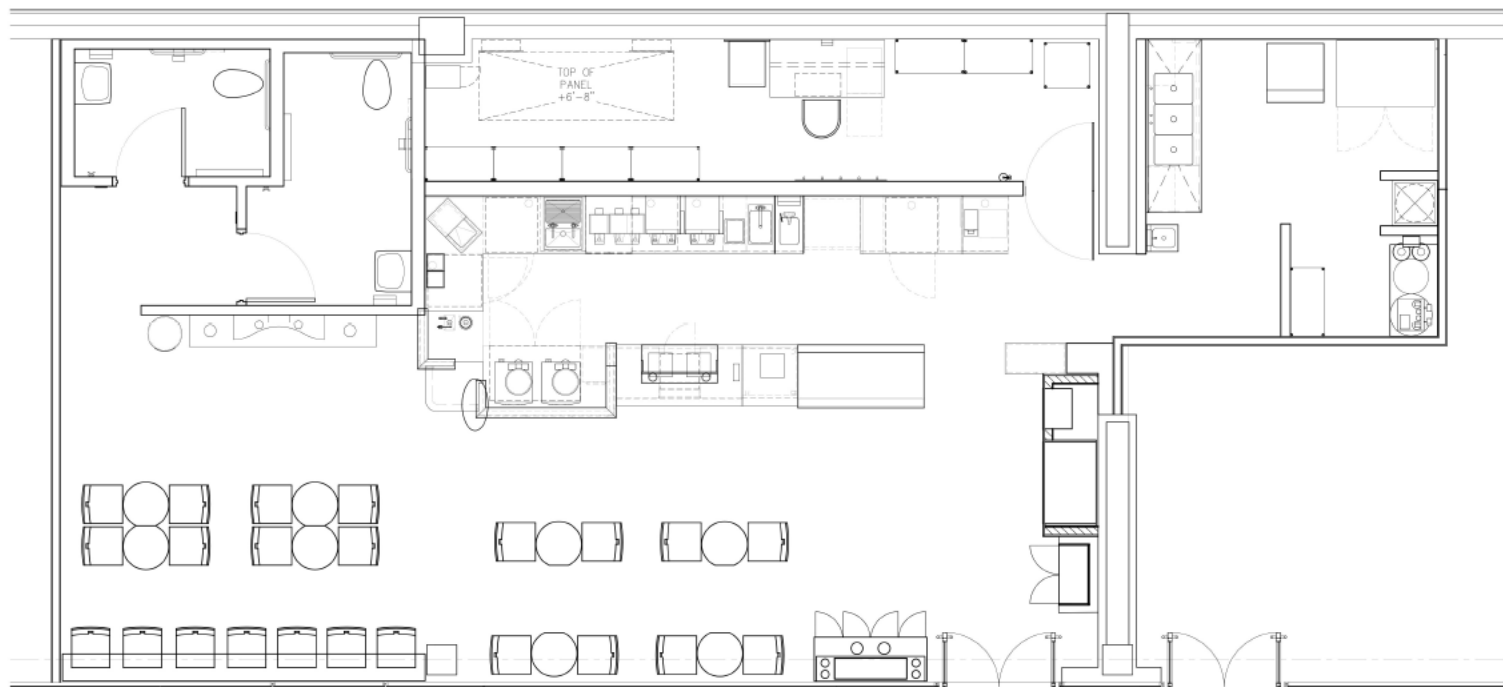
The highlights

- Strategic PATH location directly connected to Union Station and within steps of the downtown core, the waterfront and Jurassic Park / Maple Leaf Square.
- Captive consumer includes office tenants, commuters and residents in the surrounding area.
- 2021 estimated TMI: \$23.60psf (plus metered hydro)
- Pre-COVID customer count: 1,600-1,900 (weekday); 600-800 (weekend)
- LEED® Platinum AAA 30 storey office building; Major office tenants include Telus, Kinross Gold and NASDAQ



Unit A2 | ~1,557 SQ.FT.

Available August 1, 2021









For more information,
please contact:

Sam Wertman

Broker, Retail Logic Realty Inc.

M: 416.801.0176

sam@retaillogic.ca



menkes.com