



FOR LEASE | TORONTO | ON

4711 YONGE

ACCESSIBLE. ICONIC. SUSTAINABLE.



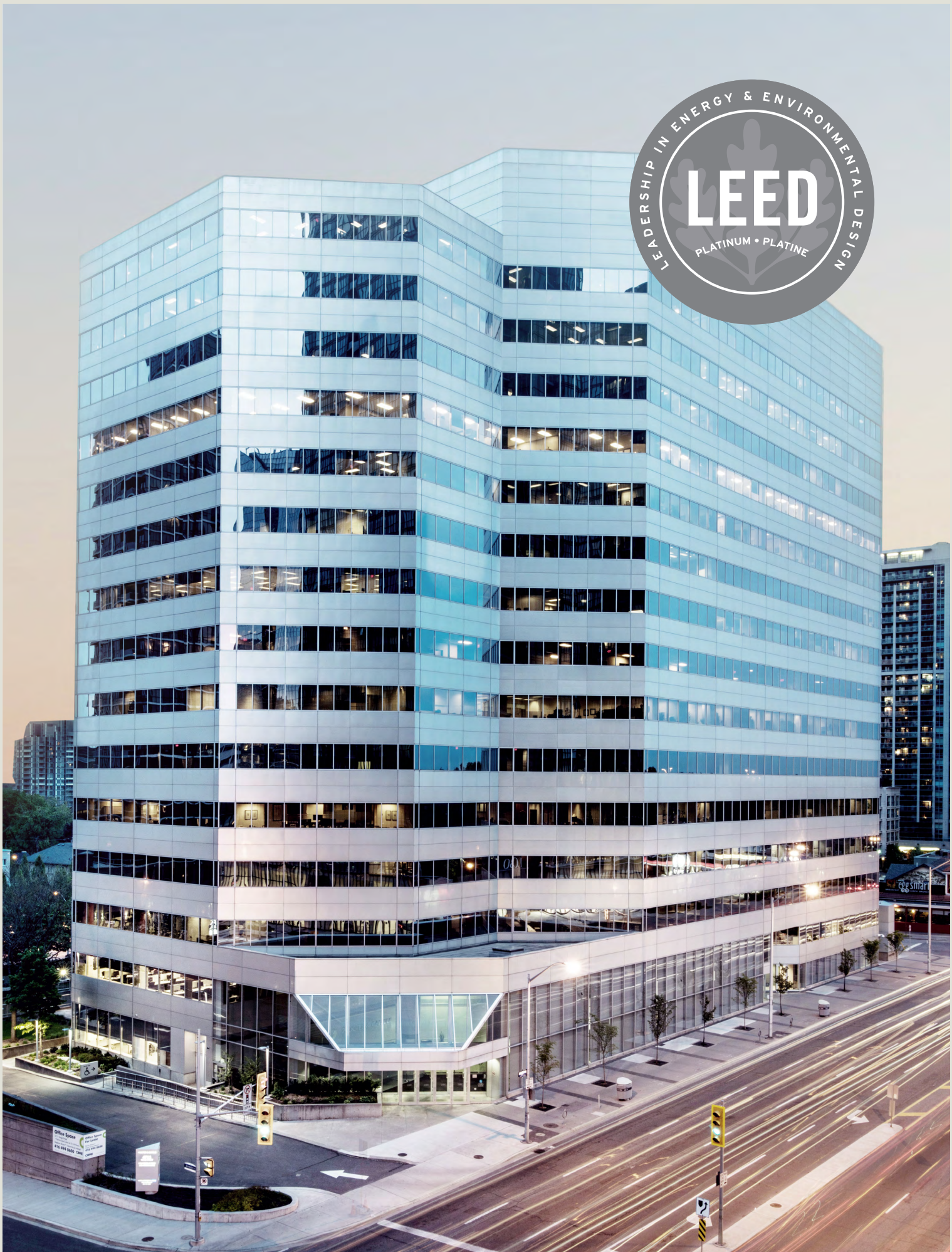
EXPERIENCE BEFORE YOU VISIT



WELCOME TO 4711 YONGE

4711 Yonge is a LEED® Platinum certified, Class A office building, standing 16 storeys tall just south of Sheppard Avenue. 4711 Yonge boasts an accessible core location where commuters benefit from being two blocks from Highway 401 and direct underground access to the Sheppard-Yonge subway station. With its central location, leading sustainability successes, 24/7 security services, and local amenities right at its doorstep, 4711 Yonge is a dynamic building that offers more than just office – **realize the prime potential of 4711 Yonge.**









HIGHWAY ACCESS

2 blocks from Hwy 401



TRANSIT

Direct subway connection to 2 lines at Sheppard-Yonge station

6 GO Bus routes within 200M of the building



CONNECTIVITY

Free lobby wi-fi

Fibre + multiple service providers & points of entry



SUSTAINABILITY

LEED® v4.1 O+M: Existing Buildings Platinum Certified

BOMA BEST® Platinum Certified

Fitwel® 3-Star Certified – Highest Scoring 2024 Built Project in the Americas

Energy Star Certified

2025 CREST Award Winner
Climate Champion



BUILDING AMENITIES

24/7 manned security, fitness centre, Vanta Coffee Club & Eatery, dentist, and ATM in the building

Concourse level seating and table area with free wi-fi and television

Destination Dispatch elevators

Electric Vehicle charging stations and bike racks available

Tire Inflation Station and Vehicle Windshield Washing Station



PARKING

1/1000 RSF unreserved underground parking at the current market rate



RESTAURANTS

Dozens of restaurants within the immediate area



ENTERTAINMENT

Close to the Meridian Arts Centre, Cineplex, and Mel Lastman Square

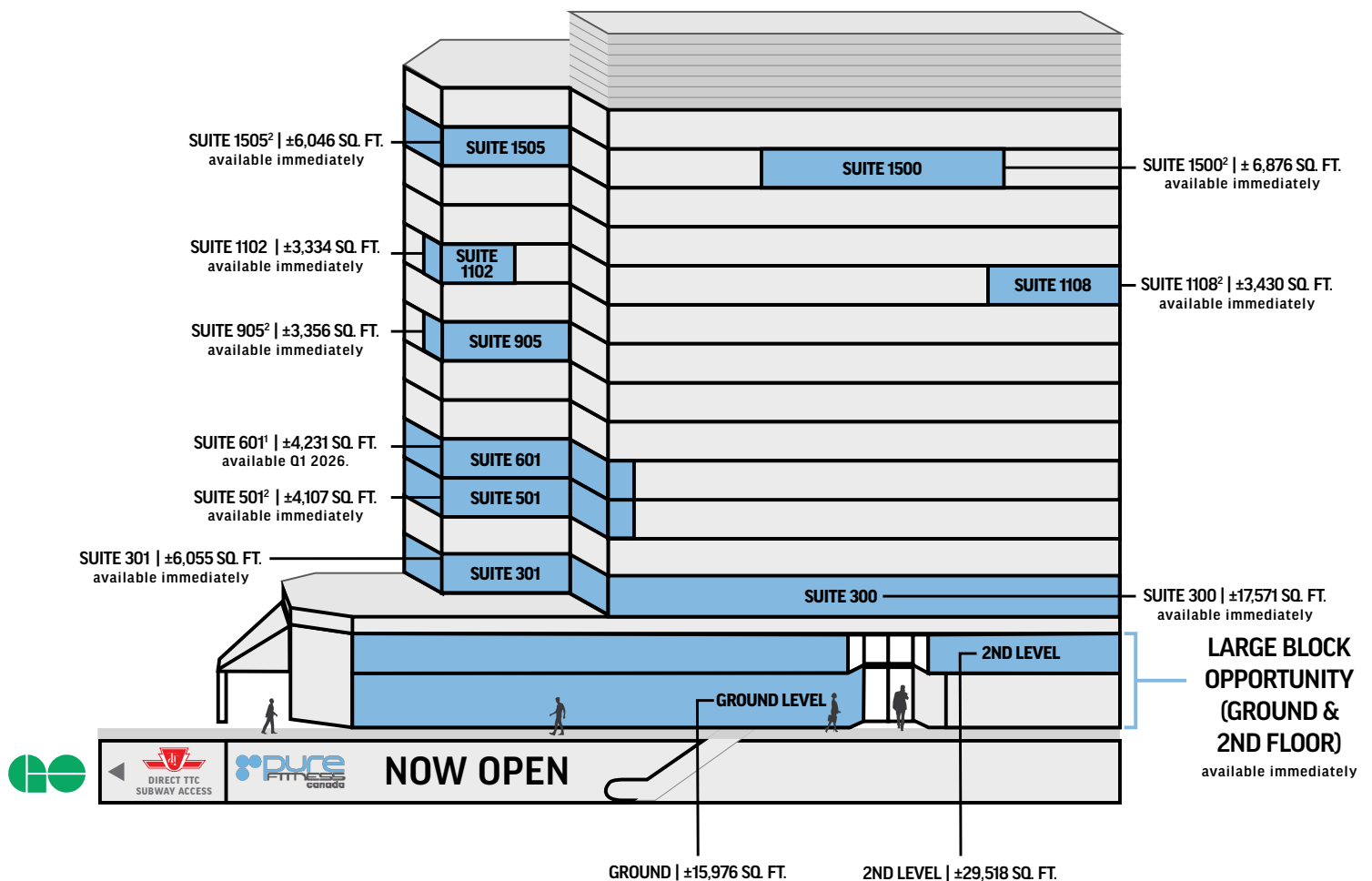


BANKS

BNS, RBC, TD, CIBC, BMO, and Meridian Bank in close proximity

4711 YONGE

AVAILABILITY



¹Future Model Suite ²Model Suite

A SNEAK PEEK AT A RE-DESIGNED LOBBY AND CAFÉ



All information contained herein is subject to change without notice. E.&O.E.

LARGE BLOCK OPPORTUNITY



Part of the ground floor and 2nd floor totals to approximately 45,000 SQ. FT. with a single or 2-floor option.



4711 Yonge offers a great opportunity for corporate branding with podium signage available.

Tap into the potential of this unique, large block of space at 4711 Yonge Street. Contact our listing team to see how we can tailor an option to suit your needs.

**COMING SOON - RE-DESIGNED
NORTH ENTRANCE**



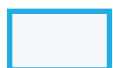
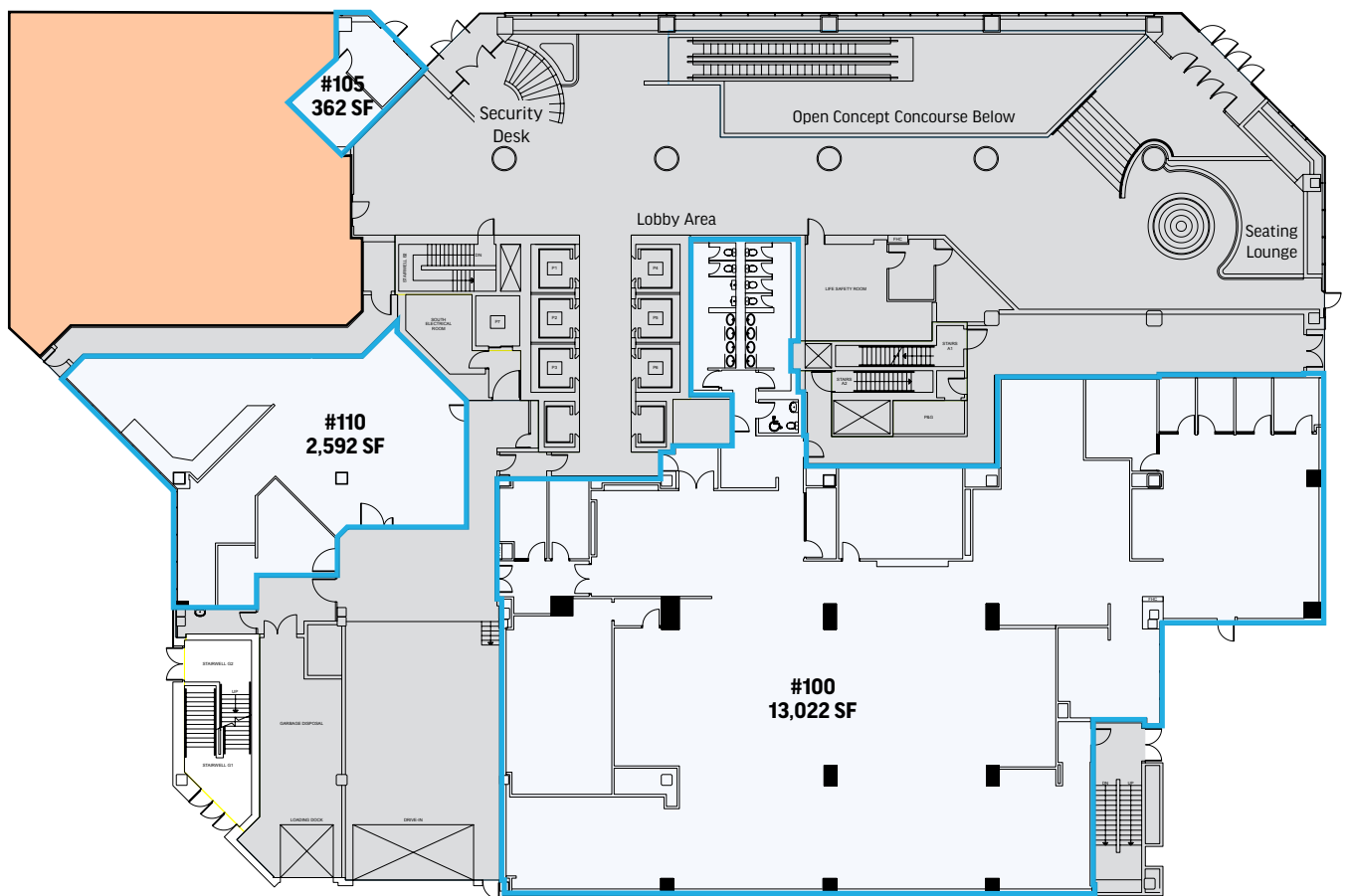
Artistic Rendering Only

GROUND



AVAILABLE SPACE: ± 15,976 SQ. FT.

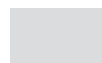
AVAILABLE: IMMEDIATELY



AVAILABLE FOR LEASE



LEASED



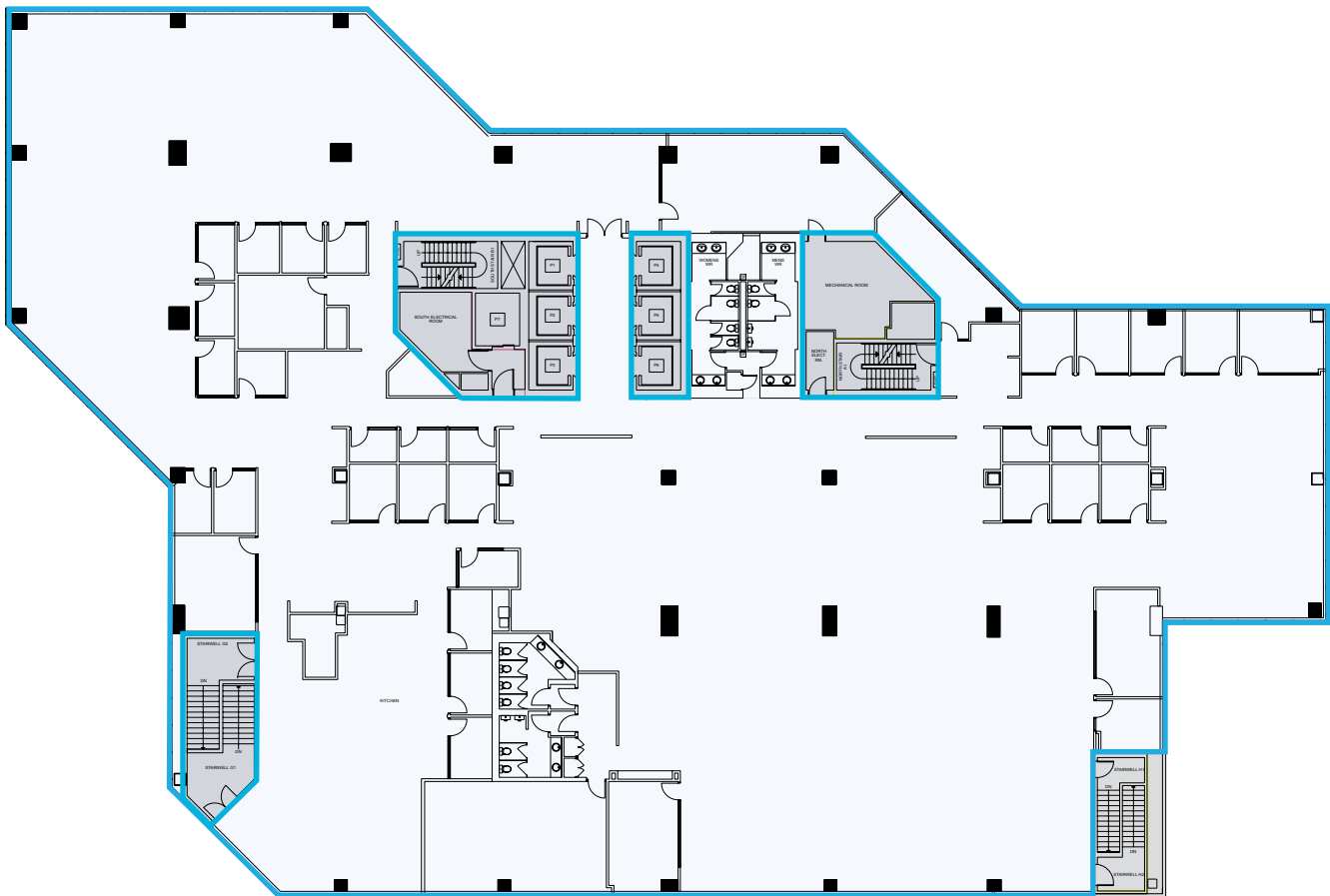
BASE BUILDING CORE + COMMON AREA

2ND LEVEL

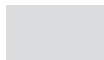


AVAILABLE SPACE: ± 29,518 SQ. FT.

AVAILABLE: IMMEDIATELY



AVAILABLE FOR LEASE



BASE BUILDING CORE + COMMON AREA

3RD FLOOR



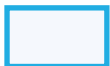
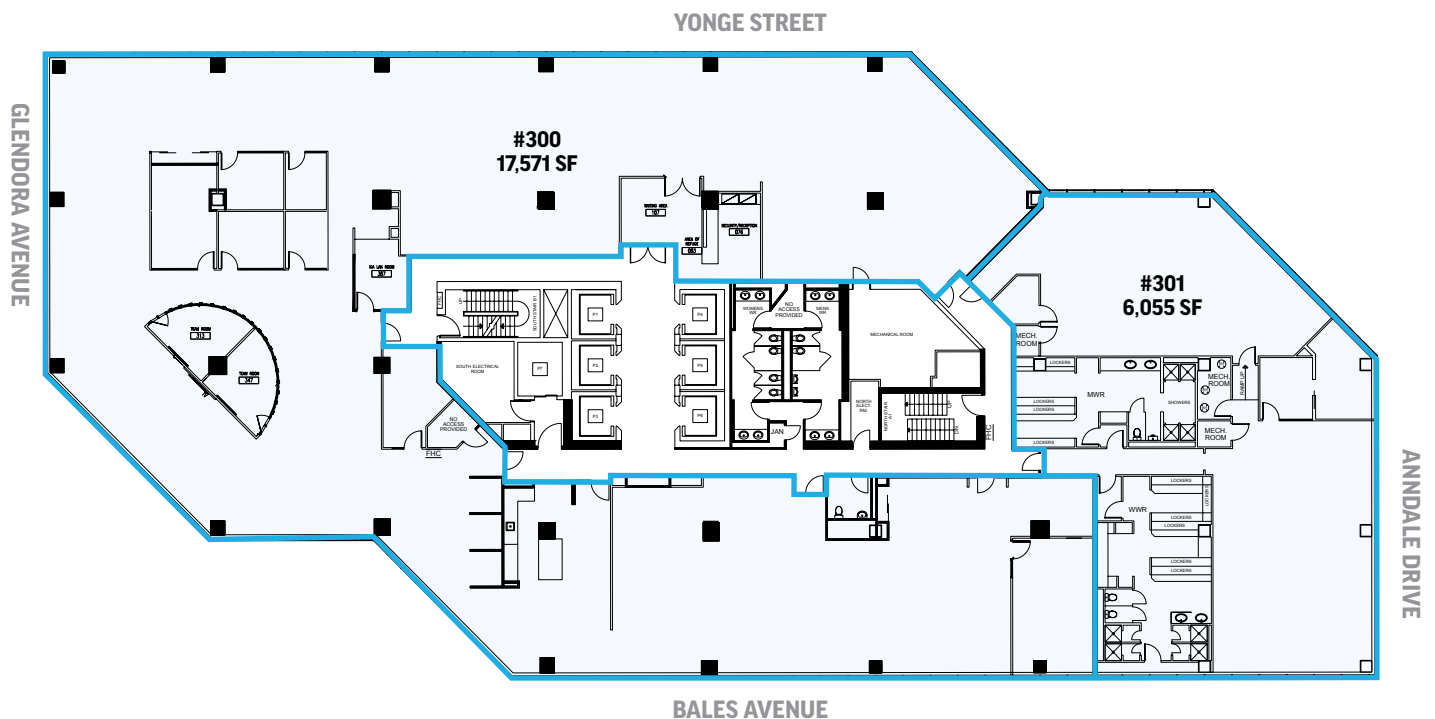
AVAILABLE SPACE:

SUITE 300: ± 17,571 SQ. FT.

SUITE 301: ± 6,055 SQ. FT.

AVAILABLE IMMEDIATELY

FULL FLOOR OPPORTUNITY



AVAILABLE FOR LEASE

5TH FLOOR



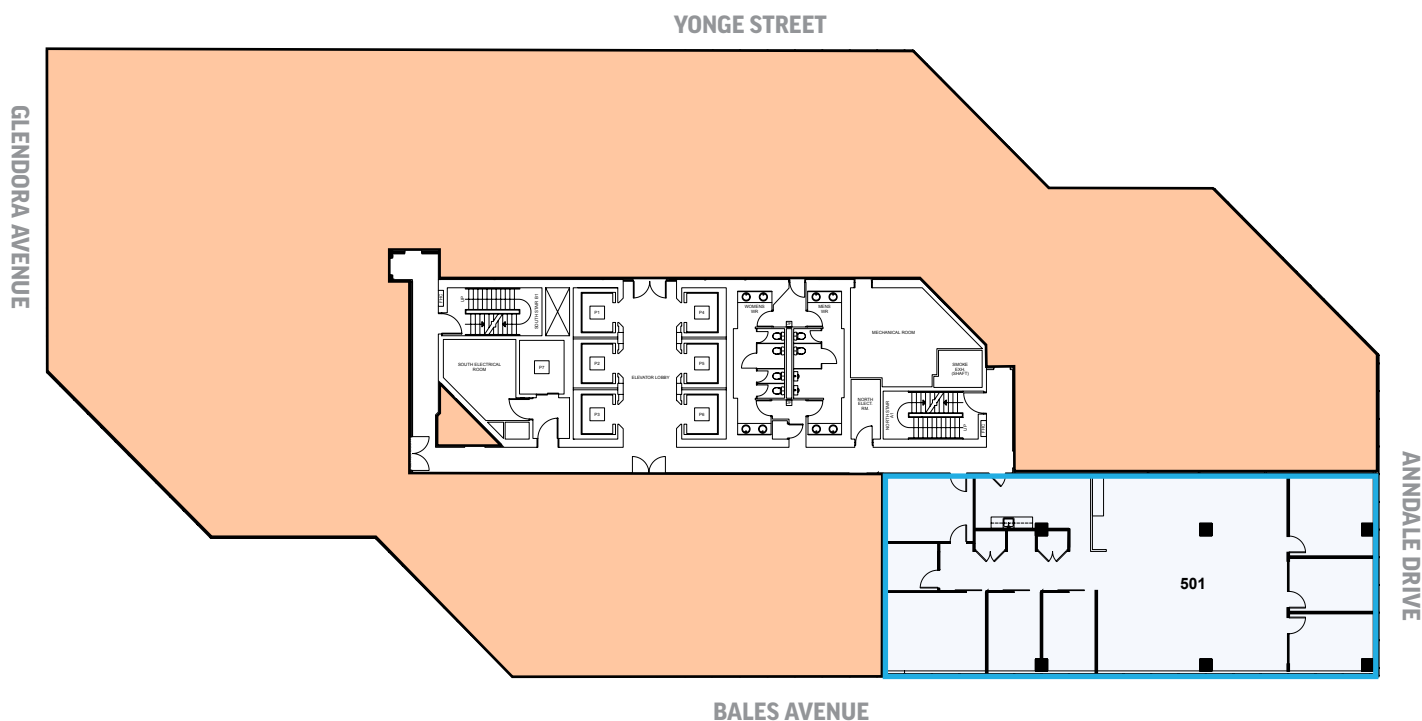
AVAILABLE SPACE:

SUITE 501²: ± 4,107 SQ. FT.

AVAILABLE: IMMEDIATELY



²Model Suite



AVAILABLE FOR LEASE



LEASED

6TH FLOOR

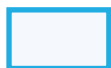
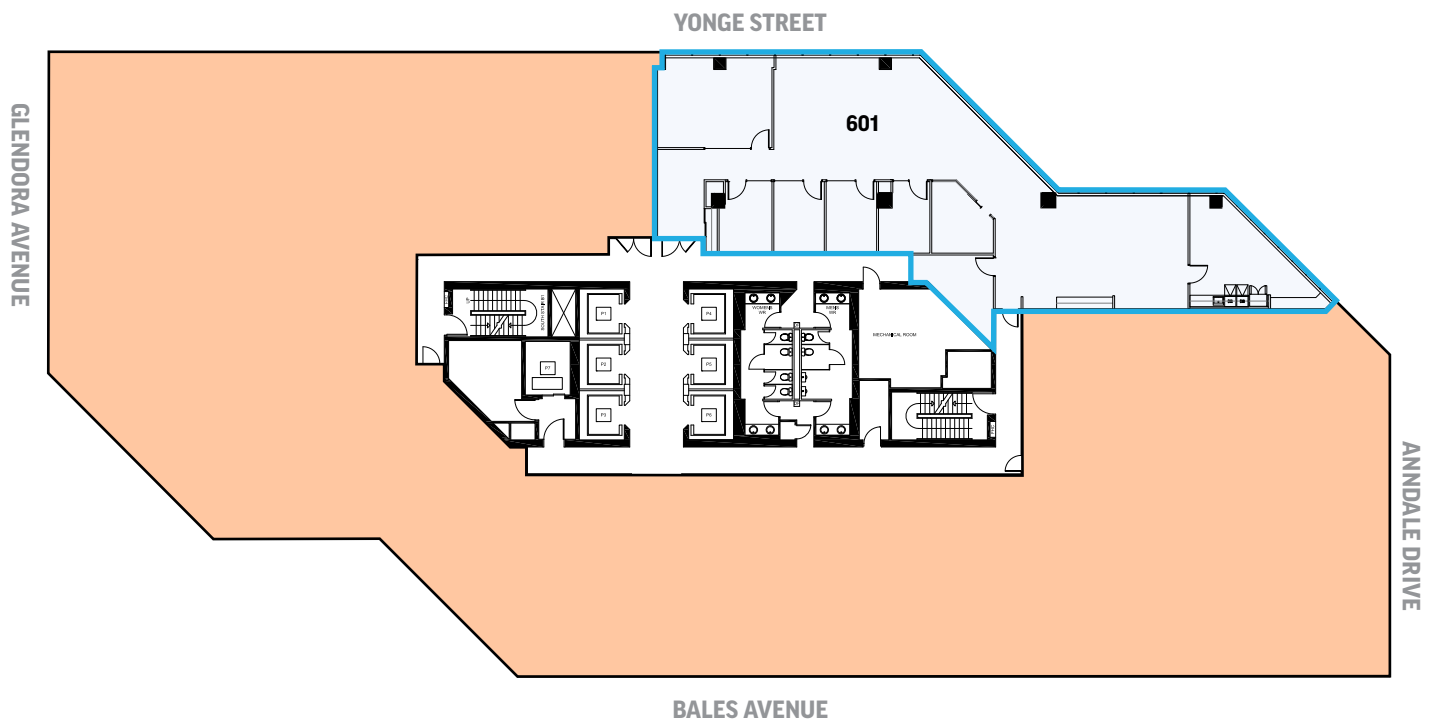


AVAILABLE SPACE:

SUITE 601¹: ± 4,231 SQ. FT.

AVAILABLE: Q1 2026.

¹Future Model Suite



AVAILABLE FOR LEASE



LEASED

9TH FLOOR



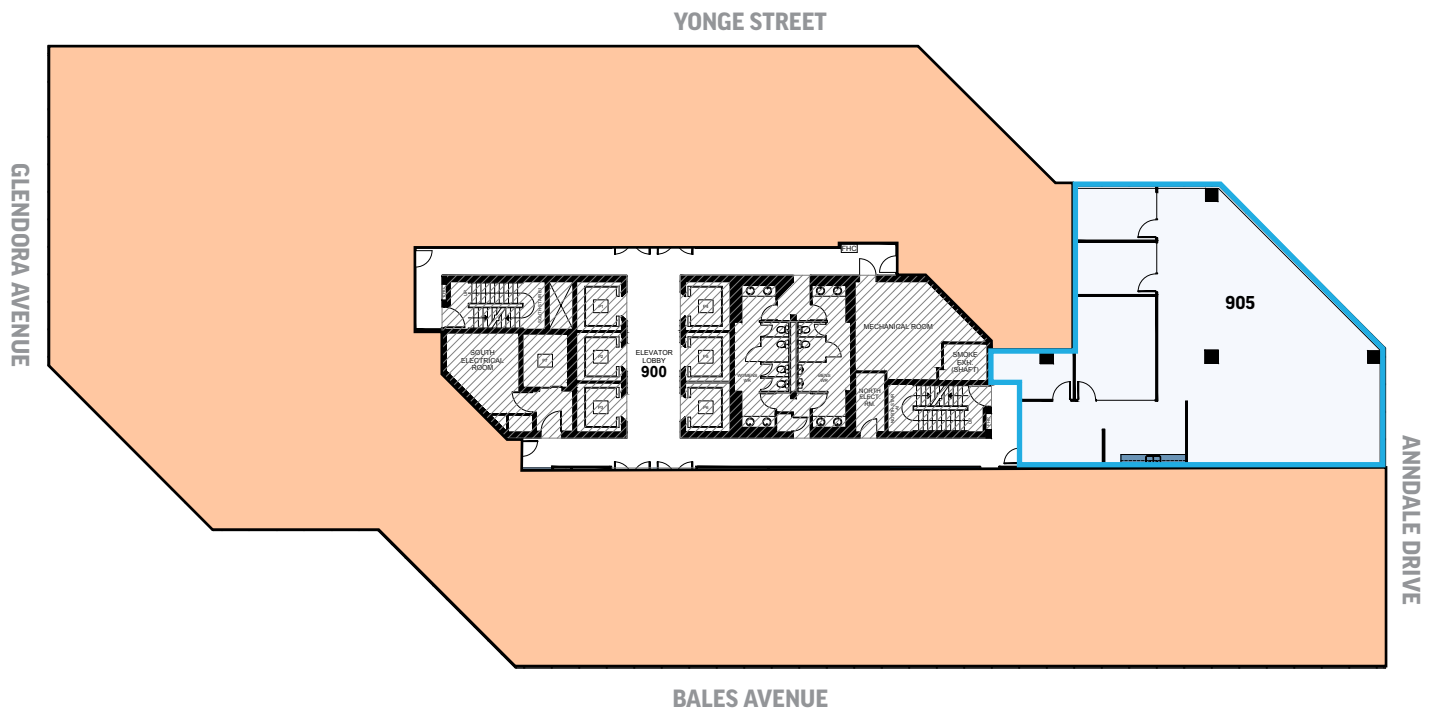
AVAILABLE SPACE:

SUITE 905²: ± 3,356 SQ. FT.

AVAILABLE: IMMEDIATELY

 **VIRTUAL TOUR**

²Model Suite



AVAILABLE FOR LEASE



LEASED

11TH FLOOR



AVAILABLE SPACE:

SUITE 1102: ± 3,334 SQ. FT.

AVAILABLE: IMMEDIATELY

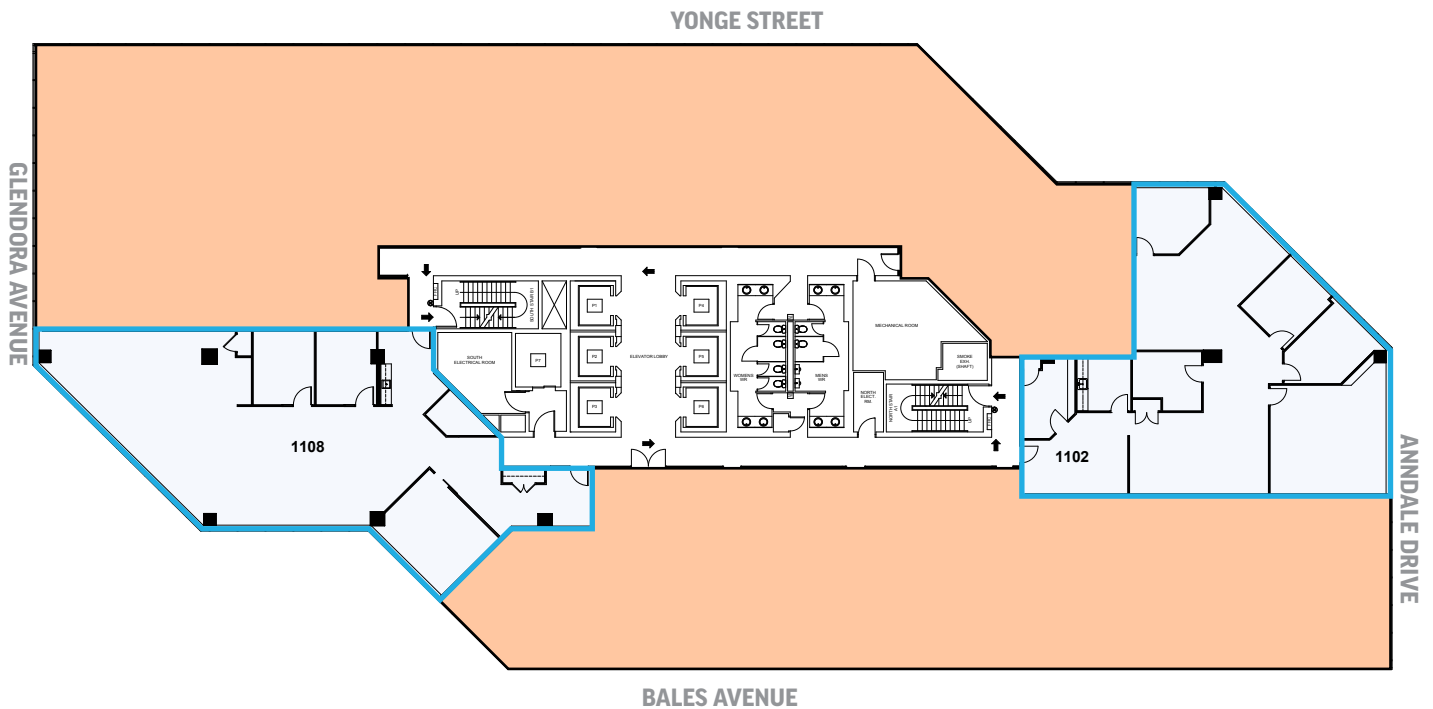


SUITE 1108²: ± 3,430 SQ. FT.

AVAILABLE: IMMEDIATELY



²Model Suite



AVAILABLE FOR LEASE



LEASED

15TH FLOOR



AVAILABLE SPACE:

SUITE 1500²: ± 6,876 SQ. FT.

AVAILABLE: IMMEDIATELY

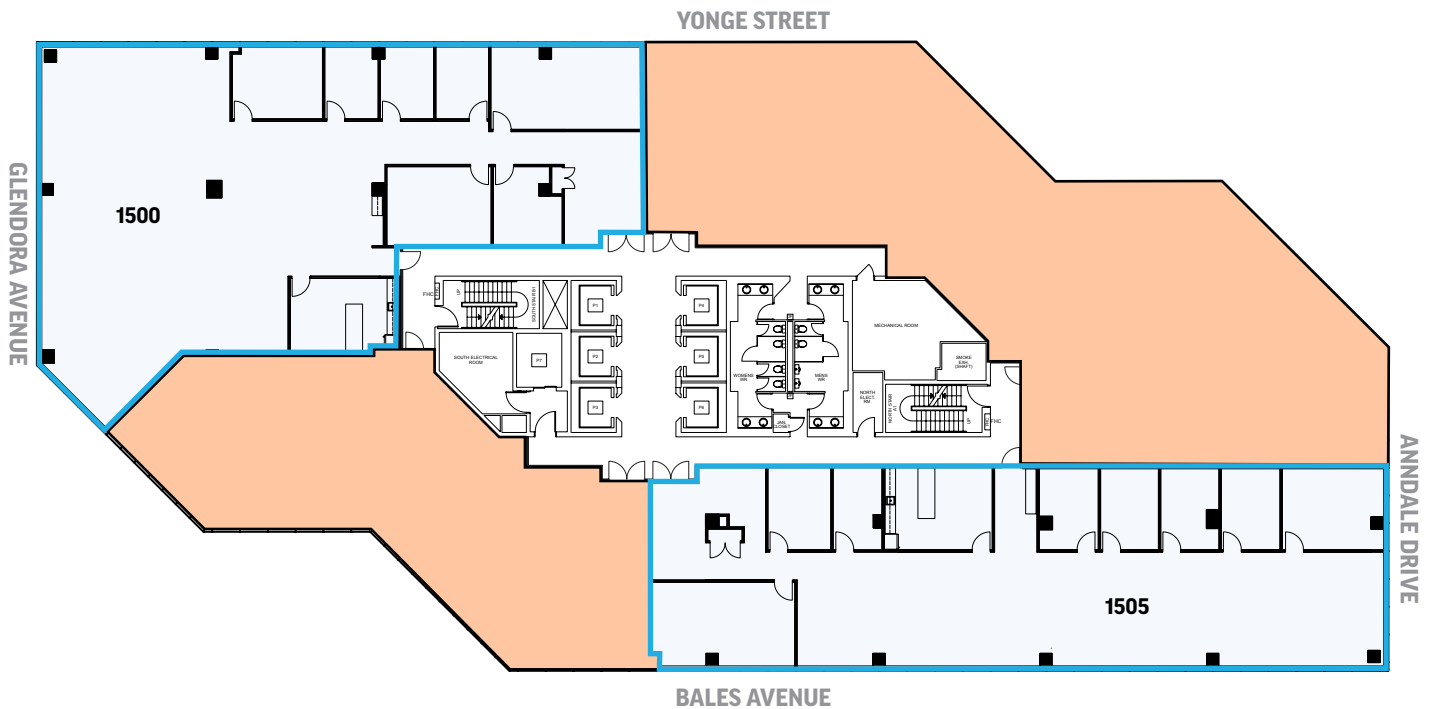


SUITE 1505²: ± 6,046 SQ. FT.

AVAILABLE: IMMEDIATELY



²Model Suite

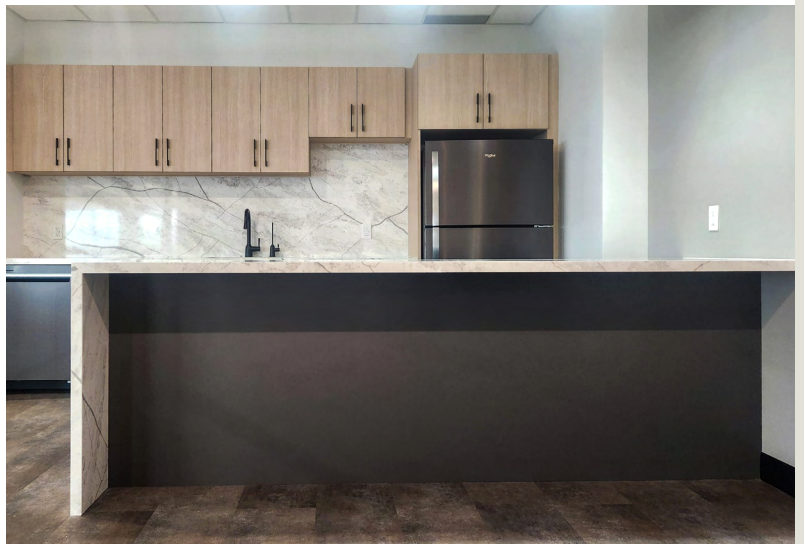


AVAILABLE FOR LEASE



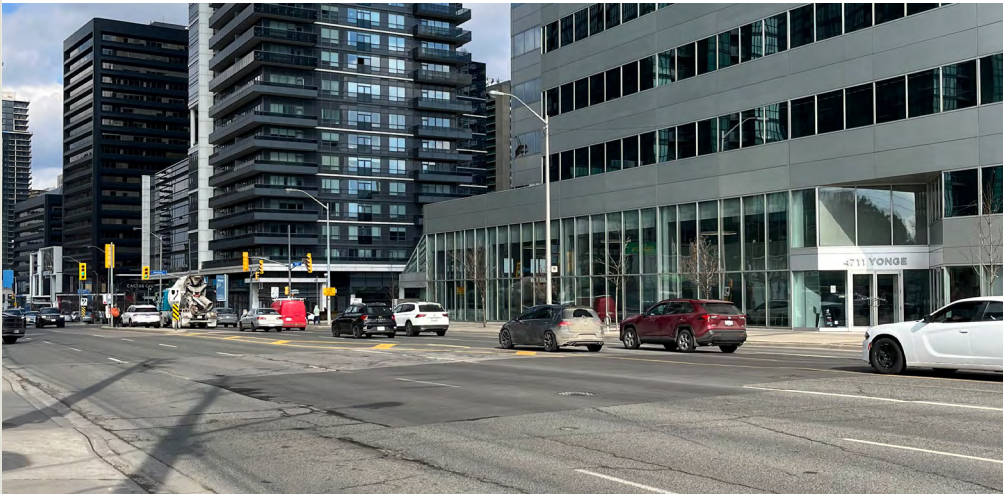
LEASED

15TH FLOOR MODEL SUITES



All information contained herein is subject to change without notice. E.&O.E.

VIBRANT, YONGE COMMUNITY





4711 YONGE STREET

Dental Office
Vanta Coffee Club & Eatery
Pure Fitness - NOW OPEN

01

HULLMARK

Big Way Hot Pot
RBC
Rexall
NewDermaMed

02

EMERALD PARK

Tim Hortons
Food Court
LCBO
Food Basics

03

SHEPPARD CENTRE

Cactus Club
Jimmy the Greek
Blaze Pizza
A&W
Five Guys
Real Fruit Bubble Tea
Subway
Wikki Hut
Omni Palace
imPerfect
Teriyaki Experience
What A Bagel
The Islands
Villa Madina
Thai Express
369 Express
Mean Poutine
Popeyes
Freshii
Tim Hortons
Purdys Chocolatier
Paris Baguette Bakery Café
Bonjuk
Freshly Squeezed
Kin-Kin Bakery
Second Cup
Winners
Sheppard Post Office
Dollarama
MiniSo
BMO
CIBC
Meridian Bank
TD Canada Trust
Shoppers Drug Mart
LA Fitness
Longos
Carter's | OshKosh B'Gosh
Reitmans
The Shoe Company
Suzy Shier
EarlyON-Lumenus
Angus Valley Montessori

04

ULTIMA GALLERIA

Menkes Condo Store
Rogers
DLK Dental
Tim Hortons
Sleep Country
Chipotle Mexican Grill

05

EMPRESS WALK

Cineplex
LCBO
Wendy's
RBC
Shoppers Drug Mart
Mumuso
Petit Potato
Shinta BBQ & Oyster Bar
Fitness F45
PetSmart
TenRen's Tea
Marble Slab Creamery

06

GIBSON SQUARE


Boston Pizza
Aroma Espresso Bar
Taya Hair Salon
Mint 32 Dentistry
Stylefave
Twilight Café

- 07 Shell
- 08 Hero Certified Burgers
- 09 Eggsmart
- 10 AllStar Wings & Ribs
- 11 TD Insurance Auto Centre
- 12 Pizza Nova
- 13 Lansing Early Years Learning
- 14 Parent Relief Daycare
- 15 Taco Bell
- 16 McDonald's
- 17 Goodlife Fitness
- 18 Galleria Supermarket
- 19 Pizzeria Libretto
- 20 Meridian Arts Centre
- 21 Cafe Landwer
- 22 The Keg Steakhouse & Bar
- 23 Mel Lastman Square
- 24 Fit4Less

AVERAGE MID-DAY DRIVE TIMES

Pearson Airport | 22 Min
Union Station | 35 Min
Highway 400 | 9 Min
Highway 404 | 6 Min





CBRE Limited, Brokerage
2005 Sheppard Avenue East
Suite 800, Toronto, ON
M2J 5B4

T +1 416 494 0600
F +1 416 494 6435
www.cbre.ca

FOR MORE INFORMATION,
PLEASE CONTACT:

Stephen Brown*
Vice President
T +1 416 495 6239
steve.brown@cbre.com

Ivana Grujic-Mates*
Transaction Manager
T +1 416 495 6281
ivana.mates@cbre.com

Tony Gill*
Executive Vice President
T +1 416 495 6261
tony.gill@cbre.com

Bryant Wilson*
Vice President
T +1 416 495 6278
bryant.wilson@cbre.com

Michelle Saberon*
Senior Transaction Manager
T +1 416 495 6381
michelle.saberon@cbre.com

Brendan Sullivan*
Senior Vice President
T +1 416 576 3335
brendan.sullivan@cbre.com

*SALES REPRESENTATIVE | ALL OUTLINES ARE APPROXIMATE

This disclaimer shall apply to CBRE Limited, Real Estate Brokerage, and to all other divisions of the Corporation, to include all employees and independent contractors ("CBRE"). The information set out herein, including, without limitation, any projections, images, opinions, assumptions and estimates obtained from third parties (the "Information") has not been verified by CBRE, and CBRE does not represent, warrant or guarantee the accuracy, correctness and completeness of the Information. CBRE does not accept or assume any responsibility or liability, direct or consequential, for the Information or the recipient's reliance upon the Information. The recipient of the Information should take such steps as the recipient may deem necessary to verify the Information prior to placing any reliance upon the Information. The Information may change and any property described in the Information may be withdrawn from the market at any time without notice or obligation to the recipient from CBRE. CBRE and the CBRE logo are the service marks of CBRE Limited and/or its affiliated or related companies in other countries. All other marks displayed on this document are the property of their respective owners. All Rights Reserved. Mapping Sources: Canadian Mapping Services canadamapping@cbre.com; MapPoint, DMTI Spatial, Enviroics Analytics, Microsoft Bing, Google Earth



CBRE